



Architectural • Mechanical • Electrical



# ABOUT US



## Who we are:

The Design House is a multi-disciplinary design consultancy firm started by four Registered professionals, all passionate about design, and considered experts in their fields. We are supported by a team of very experienced and highly trained Draftsmen, Computer Graphics Specialists and Site Technicians. Being a multi-disciplinary firm makes us a maverick of sorts in the region, where most firms are limited to one discipline and have to outsource to other professionals.

## What we do:

We specialize in Design, Installation and Supervision on residential, Commercial and Institutional projects, and our clientele range from first time home owners, to international developers, all of whom we treat with the same level of respect and professionalism. Our Architects and Engineers have experience with regional building codes, guidelines and practices, and stay current with all of the latest trends in construction technology to ensure we can always offer you the best solution.

## How we operate:

We are constantly striving to perfect our design process, so we invest heavily in training with design and render software, and insist on continued professional development for both directors and support staff. We have standardized our team's use of 3D design software, and now exclusively use Building Information Modelling (BIM) software for all of our working drawings.

The best design approach is one in which all stakeholders are integrated in the design process from conceptualization to commissioning. That is why our Architects work closely with our Electrical and Mechanical Engineers, tweaking their designs early on, so that even our very first drafts are practical, functional, and almost identical to the completed structure.

## Why Choose TDH:

- Our Designers are registered professionals and members of Professional Associations, meaning we have met and surpassed their strict standards, and comply with their codes of ethics.
- With two Architects and two Engineers under one roof, we can meet more of your design team requirements than the competition.
- With concerns about mold and indoor air quality on the rise in the Caribbean, Mechanical Engineering input is more important than ever when considering HVAC solutions.
- Our designs are eye catching, economical and functional, and because we spend the extra time getting to know our clients and their requirements, we usually hit it out of the ballpark on the first try.
- We have LEED Green Associates on our team, meaning we are focused on sustainability and green design, and are capable of helping our clients obtain LEED certification for their buildings.
- Our use of BIM design software helps to eliminate design clashes between the various disciplines, and provides accurate material lists, which in turn helps to minimize value engineering and cost over runs during construction.
- We have a large, dynamic support team, which gives us the capacity to handle large projects, or multiple simultaneous ones.
- We price our work based on the complexity of the requirements, and the time and manpower required for the job, ensuring that our fees are fair to both us and the clients.

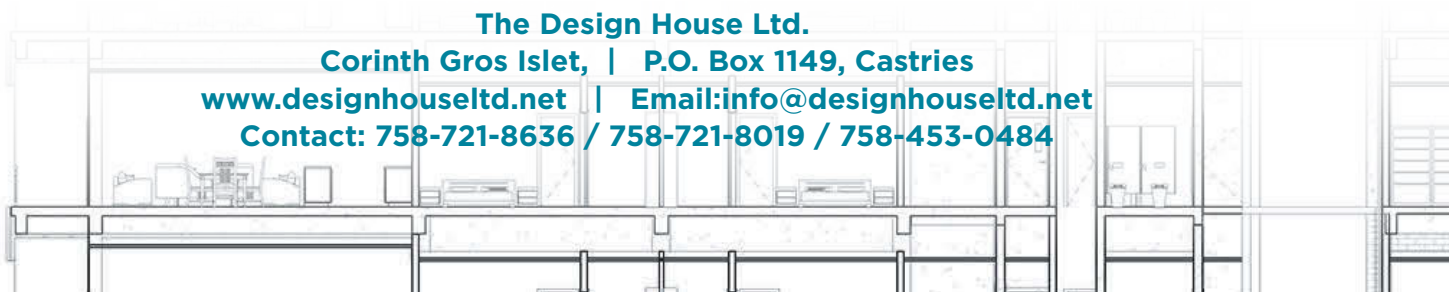
## Where to find us:

**The Design House Ltd.**

**Corinth Gros Islet, | P.O. Box 1149, Castries**

**[www.designhouseltd.net](http://www.designhouseltd.net) | [Email:info@designhouseltd.net](mailto:info@designhouseltd.net)**

**Contact: 758-721-8636 / 758-721-8019 / 758-453-0484**



## Architectural services

- Building Design and Renovation
- Client Brief preparation
- Obtaining approval from the various planning authorities
- Design review and Certification of third party designs to ensure adherence to local building codes and planning guidelines.
- Supervision and management of the entire design team during the design and planning phases.
- Contract Administration
- Project Management
- Architectural surveys of existing buildings in order to produce detailed 3D As-built drawings.
- Preparing condition survey reports for existing properties.
- Interior Design including procurement of furniture and fixtures.
- Sustainability design and guidance
- Conservation planning for existing buildings with historical and Architectural value
- Urban Design & Master-Planning

## Mechanical Engineering Services:

- Complete Building Services (Mechanical, HVAC, Fire Protection, Plumbing, etc.) Designs for Residential, Commercial & Industrial Buildings.
- Complete Sustainable Renewable Energy (Solar water heating, Rainwater Harvesting and Reuse, etc.) and Energy Efficient Building Services Designs.
- Full consultancy for building services installation and renovation projects.
- Design Review, certification & submittal of Building Services Systems & Drawings.
- Itemized Bill of Quantities for Mechanical, Fire Protection & Plumbing Services.
- Supervision, contract management & quality assurance
- Measurement, Reporting and Verification Services - We are equipped with a wide range of field instruments, including aerial images by a drone, boroscope and thermal imaging

- Monitoring and Testing of Indoor Air Quality (IAQ) Surveys; Indoor Environmental Quality (IEQ) Surveys; HVAC Equipment Surveys; Occupational Safety & Health Surveys; & Mould Contamination / Remediation Project Management.
- Energy Monitoring & Reporting; Energy Management; Equipment Energy Analysis.
- Building Services surveys of existing buildings in order to produce detailed 3D as-built systems drawings.

## Electrical Engineering Services:

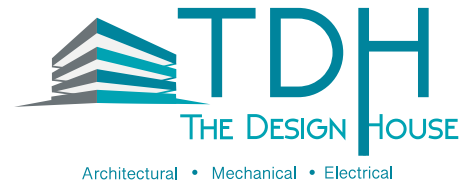
- Electrical project engineering
- Electrical cost estimation
- Field survey of existing systems, as built documentation and recommendations for upgrade
- Fire detection & security systems
- Electrical system trouble shooting
- Existing system documentation
- Medium and low voltage installation services
- Procurement support
- Load monitoring reports
- PV system design and installation
- Procurement and installation of electrical system hardware and cables
- Electrical system inspection and testing

## Other Services:

- Insurance Loss Adjusting Services
- LEED certification process coordination and management
- 3D modelling, Illustration and Photo realistic renders
- Civil and Structural Engineering designs through our associated associated engineers.
- Dispute Resolution Services: Mediation & Arbitration
- Procurement Services
- Building Information Modelling
- Landscape Architecture
- High resolution aerial photography taken by a drone

# THE TEAM

## DIRECTORS



### Jamal Francis

**Jamal Francis | Bachelors in Architecture, Registered Architect, St. Lucia Institute of Architects (member), St. Vincent and The Grenadines Institute of Architect (member), LEED Green Associate,**

Jamal Francis is an Architect by profession and has been practicing Architecture in Saint Lucia and the Caribbean for 15 years, but his 20 years of experience in the construction industry gives him a wealth of knowledge, allowing him to be at home whether at a design desk or in the field. Jamal has been involved in the design and management of many well-known projects in Saint Lucia and is respected by clients and contemporaries for his unique design style, astute problem solving and conflict resolution skills, and professional management practices. He is constantly researching new technology and building solutions to ensure he can always propose various solutions to any one design issue.



### Delbert Bynoe

**Delbert Bynoe | Bachelor's in Architecture, Registered Architect, Certified Interior Designer, ACP Revit Architecture (BIM), PMP, a member of PMI and an ACP Revit Architecture (BIM).**

Delbert Bynoe is an Architect and Project Manager with over 10 years of experience in the planning, design and construction of diverse projects inclusive of renovations (major and minor), recreational parks, residential developments, commercial and office building spaces. He has an extensive background in construction management and infrastructure, directing all project phases; from design through completion of construction, and coordinating the efforts of the contractors with those of other consultants and local government agencies. His excellent technical qualifications complement an innate sense of creativity in the design of aesthetically attractive, architecturally strong and utilitarian space alike.



# THE TEAM

## DIRECTORS



### Ing. Örjan Joe Lindberg

**Ing. Örjan Joe Lindberg | PEng, MAPESL, LEED Green Associate, ACP Revit MEP (BIM), registered Professional Mechanical Engineer member ASHRAE (CARICOM Chapter), member of NARA**

Orjan Joe Lindberg graduated with a Bachelor's Degree in Mechanical Engineering and became a Registered Professional Mechanical Engineer in 2018. Over the past 15 years he has worked on many projects gaining experience in the areas of fabrication, eco-friendly Renewable Energy, Energy Efficiency & MEPFP Designs; commercial kitchen services design, rainwater harvesting & reuse water systems; IAQ analyses and building services installations. He currently serves as the President (2019 - 2021) of the Association of Professional Engineers of Saint Lucia.



### James Charles

**James Charles | PEng BSc. MAPESL, Registered Professional Electrical Engineer, Licensed Wireman:**

James Charles is an electrical engineer with over 30 years' experience in design, installation and testing of electrical systems. His extensive portfolio includes designs for numerous public and private sector institutions. He was employed with the Saint Lucian Government (Electrical Inspection Department) and was recently a member of the Saint Lucia Electrical Licensing Authority for three years. His experience coupled with his ability to deliver his projects on time have made him a well trusted and much sought after professional. He is a registered professional electrical engineer and a member of the Association of Professional Engineer of St. Lucia

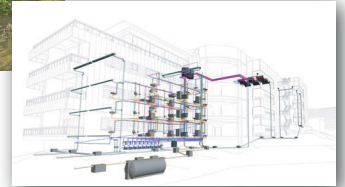


# TDH NOTABLE PROJECTS



## Pari Villa Complex, Saint Lucia

A challenging site with magnificent views, gave birth to this modern, energy efficient, mixed use building, which will house commercial offices, high end condo units, and a rooftop restaurant with the best views in the north of the island. The client is a foreign based, internationally respected developer, whose requirements as far as aesthetics, material selection and sustainability were extremely high. All Architectural, Mechanical and Electrical designs were handled by our team.



## Rendezvous Spa Extension, Saint Lucia

When Rendezvous Hotel needed to expand their services in order to remain competitive, they brought us in to handle the Architectural design. We created for them a hidden spa village, comprising multiple spa houses, whose Architecture matched the traditional building style of their hotel. The walkways will be flanked with lush vegetation, and water features, in the true spirit of what their hotel represents to its many happy guests. Modern and energy efficient LED lighting will be used to high-light the intricate fretwork detailing. This project was a joy to design, as theirs is one of very few hotels which still appreciates true Caribbean Architecture.



## Golf Side Mansion, Saint Lucia

Located on the edge of a golf course, this five bedroom five and a half bath residence was designed to ensure enjoyment of both indoor and outdoor living. It includes a 2 car Garage, 25ft by 55ft swimming pool, a generous pool house for entertaining, and a large sweeping neoclassical staircase on the inside. This project was taken all the way from design to construction, and was our first design build project. Through prudent site management and project supervision the client realized a savings of nearly 15% on the initial estimated construction cost.



## Wasco Southern Head Quarters, Saint Lucia

We were brought in to provide Interior Design, Mechanical and Plumbing design for this modern administrative building. The 2 storey ceiling height at the entrance gave us the opportunity to develop a dynamic, stunning concept for the lobby. Our timber slatted ceiling transitions from indoor to outdoor, working with the full height glass facade to give the impression of outdoor seating, while in the waiting area



## Mechanical / Architectural/ Electrical

### The New Hewanorra International Airport Project, Saint Lucia

**Client:** SLASPA | CBRE-HEERY

**Role:** Mechanical Engineer on Record; Electrical Engineer on Record; Architect on Record

**Responsibilities:** Architectural and MEPFP Design Review, Architectural & Building Services supervision.

## Mechanical: HVAC, Plumbing & Fire Protection

### St. Jude Hospital Restoration Project, Saint Lucia

**Client:** Government of Saint Lucia

**Role:** Consultant Mechanical Engineer with John C. Francis Associates Ltd

**Responsibilities:** HVAC Systems Design & Installation.

### Baywalk Shopping Mall, Saint Lucia

**Client:** Hebah Ltd

**Role:** Consultant Mechanical Engineer with John C. Francis Associates Ltd

**Responsibilities:** Overall Mechanical & Design and Supervision.

### Dennerly Polyclinic, Saint Lucia

**Client:** Government of Saint Lucia

**Role:** Mechanical Design Engineer

**Responsibilities:** Full MEPFP review and redesign of HVAC, plumbing and fire Full MEPFP Review and Re-design of HVAC, Plumbing & Fire Protection Systems.

### The Harbor Club, Curio Collection by Hilton; LEED Gold Status, Saint Lucia

**Client:** Sunrod Ltd

**Role:** Consultant Mechanical Engineer with Sandy Brown West Indies Ltd

**Responsibilities:** Overall MEPFP Design & Supervision.

### Port Arrival Terminal Building, Montserrat

**Client:** LPA

**Role:** Mechanical Design Engineer

**Responsibilities:** Overall MEP Design.

### Soufriere Square, Saint Lucia

**Client:** Government of Saint Lucia

**Role:** Mechanical Engineer

**Responsibility:** Full Design and Supervision of all Plumbing and Fountain Systems

## Architectural

### St. Vincent and The Grenadines Greenhouse Packing facilities, St. Vincent

**Client:** Government of St. Vincent and the Grenadines

**Role:** Consultant Architects with FDL Consult

**Responsibilities:** Master Planning and Full Architectural Design

### Owen King EU National Hospital, Saint Lucia

**Client:** Government of Saint Lucia (E.U. Funded)

**Role:** Assistant Consultant Architects with Tropical Architecture Group

**Responsibilities:** Contract Administration, Value Engineering and Architectural Supervision

### CPJ Mini Mart, Saint Lucia

**Client:** Caribbean Producers Jamaica

**Role:** Architectural Design and supervision of new retail store in Culdesac.

### L'Armitage Housing Development, Saint Lucia

**Client:** Construction and Industrial Equipment

**Role:** Architectural Design and Supervision of Mid & Low Housing Development at Monchy.

## Electrical

### Caribbean Grains Flour Mill

**Client:** Caribbean Grains Ltd (

**Role:** Electrical Engineer

**Responsibilities:** Full design and supervision

### Dennerly Polyclinic, Saint Lucia

**Client:** Government of Saint Lucia

**Role:** Electrical Engineer

**Responsibilities:** Full Electrical Design

### Sandals La Source, Grenada

**Client:** Sandals Resorts International

**Role:** Electrical Engineer

**Responsibilities:** Electrical Engineering Designs

### District Court, Saint Lucia

**Client:** Government of Saint Lucia

**Role:** Electrical Engineer

**Responsibilities:** Full Electrical Design and Supervision

### NIC Financial Administrative Center

**Client:** National Insurance Corporation

**Role:** Electrical Engineer

**Responsibilities:** Full Electrical Design





Architectural • Mechanical • Electrical

**The Design House Ltd.**

**Corinth Gros Islet, | P.O. Box 1149, Castries**

**[www.designhousetd.net](http://www.designhousetd.net) | [Email:info@designhousetd.net](mailto:info@designhousetd.net)**

**Contact: 758-721-8636 / 758-721-8019 / 758-453-0484**